

3,81 mm SOCKET PRINTED CIRCUIT TERMINAL - FEMALE



Production Code : 174 SBDK-D



TECHNICAL DATA

DIMENSIONS

Width	15,19 mm
Height	12,25 mm
Depth	14,94 mm
Pin range	3,81 mm
Pin thickness	-
Pin hole diameter	-

TECHNICAL DATA

Current	8 A
Voltage	160 V
Cable cross section	0,25 – 1,5 mm ²
Cable stripping	6 mm
Screw size	M2
Nominal torque	0,2 Nm
Flammability rating	VO
Coating of metals	μ3+AG

GENERAL ORDERING DATA

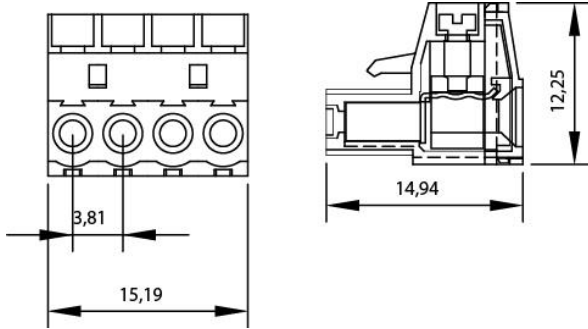
Type	3,81 mm Socket Terminal Series Female Pin 4
Qty	200 pcs
Order no	10.015 - 11.015 - 12.015 13.015 - 14.015 - 15.015
Package weight	0,8 kg
Packaging	Box
Min. Order Qty	200 pcs
Country of origin	TURKEY

* Stock color is green.

CERTIFICATES

CERTIFICATE	ISSUED BY
TS 10487 EN 60998-2-1	TSE
CE	SZUTEST CO.
RoHS	İNTERTEK A.Ş.
EAC	SERCONS

DRAWINGS

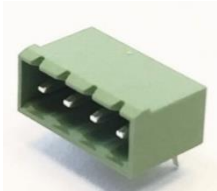


3,81 mm SKBK (11.155)



COMBINE PRODUCTS

3,81 mm SBDK-E 90° (11.054)



3,81 mm SBDK-E 180° (11.106)

