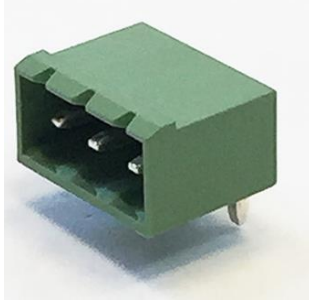


## 3,81 mm SOCKET PRINTED CIRCUIT TERMINAL – MALE 90°



Production Code : 173 SBDK-E1



### TECHNICAL DATA

#### DIMENSIONS

Width	12,75 mm
Height	6,42 mm
Depth	10,00 mm
Pin range	3,81 mm
Pin thickness	1x1 mm
Pin hole diameter	1,55 mm

#### TECHNICAL DATA

Current	8 A
Voltage	160 V
Cable cross section	-
Screw size	-
Nominal torque	-
Flammability rating	VO
Coating of metals	μ3+AG

### GENERAL ORDERING DATA

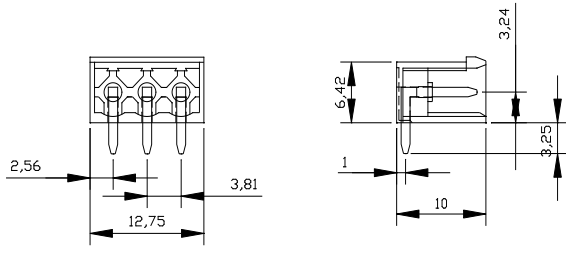
Type	3,81 mm Socket Terminal Series Male 90° Pin 3
Qty	200 pcs
Order no	10.052 - 11.052 - 12.052 13.052 - 14.052 - 15.052
Package weight	0,2 kg
Packaging	Box
Min. Order Qty	200 pcs
Country of origin	TURKEY

\* Stock color is green.

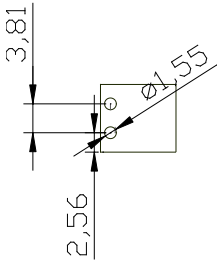
### CERTIFICATES

CERTIFICATE	ISSUED BY
TS 10487 EN 60998-2-1	TSE
CE	SZUTEST CO.
RoHS	İNTERTEK A.Ş.
EAC	SERCONS

## DRAWINGS



## Diagram



## COMBINE PRODUCTS

**3,81 mm SBDK-D (11.013)**

