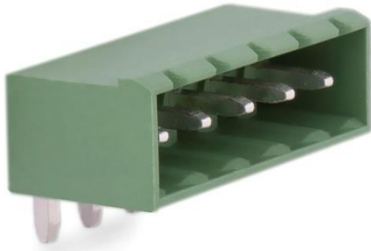


3,81 mm SOCKET PRINTED CIRCUIT TERMINAL – MALE 90°



Production Code : 175 SBDK-E1



TECHNICAL DATA

DIMENSIONS

Width	20,37 mm
Height	6,42 mm
Depth	10,00 mm
Pin range	3,81 mm
Pin thickness	1x1 mm
Pin hole diameter	1,55 mm

TECHNICAL DATA

Current	8 A
Voltage	160 V
Cable cross section	-
Screw size	-
Nominal torque	-
Flammability rating	V0
Coating of metals	μ3+AG

GENERAL ORDERING DATA

Type	3,81 mm Socket Terminal Series Male 90° Pin 5
Qty	200 pcs
Order no	10.056 - 11.056 - 12.056 13.056 - 14.056 - 15.056
Package weight	0,34 kg
Packaging	Box
Min. Order Qty	200 pcs
Country of origin	TURKEY

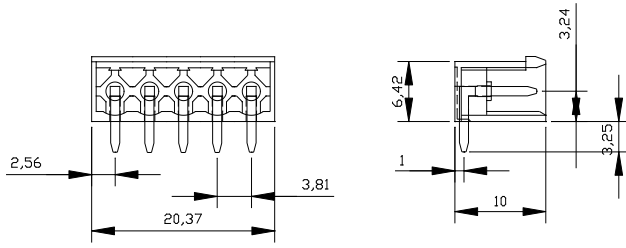
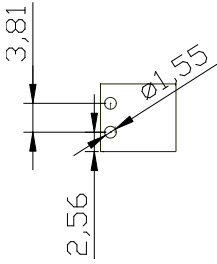
* Stock color is green.

CERTIFICATES

CERTIFICATE	ISSUED BY
TS 10487 EN 60998-2-1	TSE
CE	SZUTEST CO.
RoHS	İNTERTEK A.Ş.
EAC	SERCONS

**MEGARADAR®**

Elektrik Elektronik İnşaat San. Tic. A.Ş.

DRAWINGS**Diagram****COMBINE PRODUCTS****3,81 mm SBDK-D (11.017)**