

7,62 mm SOCKET PRINTED CIRCUIT TERMINAL– FEMALE



Production Code : 236 SBDK-D



TECHNICAL DATA

DIMENSIONS

Width	43,73 mm
Height	15,95 mm
Depth	18,15 mm
Pin range	7,62 mm
Pin thickness	-
Pin hole diameter	-

TECHNICAL DATA

Current	16 A
Voltage	400 V
Cable cross section	0,25 – 2,5 mm ²
Cable stripping	7 mm
Screw size	M3
Nominal torque	0,25 Nm
Flammability rating	V0
Coating of metals	µ3+AG

GENERAL ORDERING DATA

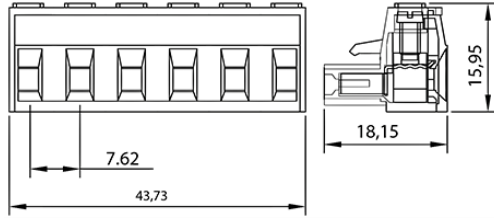
Type	7,62 mm Socket Terminal Series Female Pin 6
Qty	100 pcs
Order no	10.706 - 11.706 - 12.706 13.706 - 14.706 - 15.706
Package weight	1,2 kg
Packaging	Box
Min. Order Qty	100 pcs
Country of origin	TURKEY

*Stock colors are blue and green.

CERTIFICATES

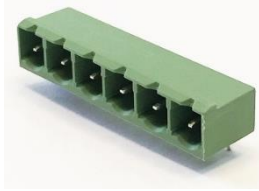
CERTIFICATE	ISSUED BY
TS 10487 EN 60998-2-1	TSE
CE	SZUTEST CO.
RoHS	İNTERTEK A.Ş.
EAC	SERCONS

DRAWINGS



COMBINE PRODUCTS

7,62 mm SBDK-E1 (10.806)



7,62 mm SBDK-E2 (10.856)



7,62 mm SKBK (10.906)

